

100% Money Back
Guarantee

Vendor:Microsoft

Exam Code:70-410

Exam Name:Installing and Configuring Windows
Server 2012

Version:Demo

QUESTION 1

You have a print server named Server1.

You install a printer on Server1. You share the printer as Printer1.

You need to configure Printer1 to be available only from 19:00 to 05:00 every day.

Which settings from the properties of Printer1 should you modify?

- A. Sharing
- B. Security
- C. Advanced
- D. Device Settings
- E. Ports

Correct Answer: C

When navigating to the printer properties, the Properties tab is divided into several different tabs of which the Advanced tab will give you access to the scheduling where you can configure the availability of the printer. Reference: <http://technet.microsoft.com/en-us/library/cc722526.aspx>

QUESTION 2

A company's network administrator needs to ensure a specific IP address is never assigned by a Windows Server 2012 R2 DHCP server to any device connecting to the network.

Which of the following should the administrator configure on the Windows Server 2012 R2 DHCP server?

- A. Reservation
- B. Scope options
- C. NAP
- D. Scope properties

Correct Answer: B

Configuring an IP address as a reservation will restrict a DHCP server's assignment of that address unless a specific MAC address makes a request for the address.

Exclusion is for not use the IP Address or range inside the Scope Pool, Filter is for not use the MAC Address or range.

Quick Tip: Policies can also be defined per scope or server. Policy based assignment (PBA) allows an administrator to group DHCP clients by specific attributes based on fields contained in the DHCP client request packet. This feature allows

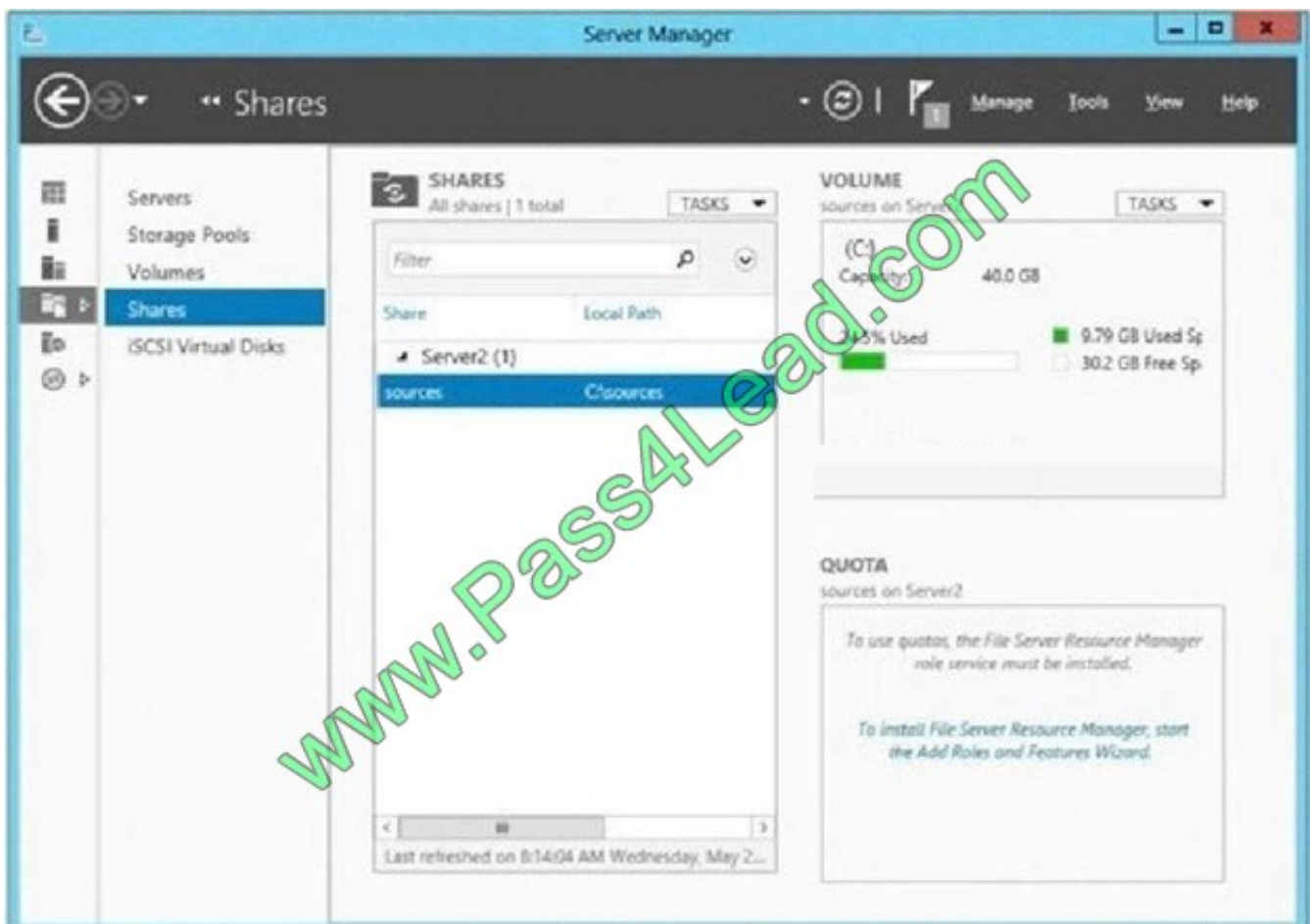
for targeted administration and greater control of configuration parameters delivered to network devices.

QUESTION 3

You have a server named Server2 that runs Windows Server 2012 R2. You open Server Manager on Server2 as shown in the exhibit. (Click the Exhibit button.) The Everyone group has read share permission and read NTFS permission to Sources.

You need to ensure that when users browse the network, the Sources share is not visible.

What should you do?



- A. From the properties of the Sources folder, remove the Sources share, and then share the Sources folder as Sources\$
- B. From the properties of the Sources folder, deny the List Folder Contents permission for the Everyone group
- C. From the properties of the Sources share, configure access-based enumeration
- D. From the properties of the Sources folder, configure the hidden attribute

Correct Answer: A

QUESTION 4

You perform a Server Core Installation of Windows Server 2012 R2 on a server named Server1.

You need to add a graphical user interface (GUI) to Server1.

Which tool should you use?

- A. The setup.exe command
- B. The dism.exe command
- C. The imagex.exe command
- D. The Install-WindowsFeature cmdlet

Correct Answer: B

The DISM command is called by the Install-WindowsFeature command. Here is the syntax for DISM:

```
Dism/online /enable-feature /featurename: ServerCore-FullServer /featurename:ServerGui-Shell /featurename:Server-Gui-Mgmt
```

References: https://blogs.technet.microsoft.com/john_taylor/2013/01/08/convertig-from-server-2012-core-install-to-full-gui/

<https://docs.microsoft.com/en-us/powershell/module/servermanager/install-windowsfeature?view=winserver2012r2-ps>

QUESTION 5

You work as an administrator at Contoso.com. The Contoso.com network consists of a single domain named Contoso.com. All servers in the Contoso.com domain, including domain controllers, have Windows Server 2012 R2 installed.

Contoso.com has a domain controller, named ENSUREPASS-DC01.

You have been instructed to make sure that the Group Policy Administrative Templates are available centrally.

Which of the following actions should you take?

- A. You should consider copying the policies folder to the PolicyDefinitions folder in the Contoso.com domain\\'s SYSVOL folder.
- B. You should consider copying the PolicyDefinitions folder to the policies folder in the Contoso.com domain\\'s SYSVOL folder.
- C. You should consider copying the PolicyDefinitions folder to the policies folder in the Contoso.com domain\\'s systemroot folder.
- D. You should consider copying the PolicyDefinitions folder to the policies folder in the Contoso.com domain\\'s logonserver folder.

Correct Answer: B

PolicyDefinitions folder within the SYSVOL folder hierarchy.

By placing the ADMX files in this directory, they are replicated to every DC in the domain; by extension, the ADMX-aware Group Policy Management Console in Windows Vista, Windows 7, Windows Server 2008 and R2 can check this folder

as an additional source of ADMX files, and will report them accordingly when setting your policies.

By default, the folder is not created. Whether you are a single DC or several thousand, I would strongly recommend you create a Central Store and start using it for all your ADMX file storage. It really does work well.

The Central Store

To take advantage of the benefits of .admx files, you must create a Central Store in the SYSVOL folder on a domain controller. The Central Store is a file location that is checked by the Group Policy tools. The Group Policy tools use any

.admx files that are in the Central Store. The files that are in the Central Store are later replicated to all domain controllers in the domain. To create a Central Store for .admx and .adml files, create a folder that is named PolicyDefinitions in the

following location: \\FQDN\SYSVOL\FQDN\policies.

Note: FQDN is a fully qualified domain name.

QUESTION 6

Your network contains an Active Directory domain named contoso.com. The DNS zone for contoso.com is Active-Directory integrated.

The domain contains 500 client computers. There are an additional 20 computers in a workgroup.

You discover that every client computer on the network can add its record to the contoso.com zone.

You need to ensure that only the client computers in the Active Directory domain can register records in the contoso.com zone.

What should you do?

- A. Sign the contoso.com zone by using DNSSEC.
- B. Configure the Dynamic updates settings of the contoso.com zone.
- C. Configure the Security settings of the contoso.com zone.
- D. Move the contoso.com zone to a domain controller that is configured as a DNS server.

Correct Answer: B

QUESTION 7

You work as a senior administrator at Contoso.com. The Contoso.com network consists of a single domain named Contoso.com. All servers on the Contoso.com network have Windows Server 2012 R2 installed.

You are running a training exercise for junior administrators. You are currently discussing the new VHD format called VHDX.

Which of the following is TRUE with regards to VHDX? (Choose all that apply.)

- A. It supports virtual hard disk storage capacity of up to 64 GB.
- B. It supports virtual hard disk storage capacity of up to 64 TB.
- C. It does not provide protection against data corruption during power failures.
- D. It has the ability to store custom metadata about the file that the user might want to record.

Correct Answer: BD

The main new features of the VHDX format are:

Support for virtual hard disk storage capacity of up to 64 TB.

Protection against data corruption during power failures by logging updates to the VHDX metadata structures.

Improved alignment of the virtual hard disk format to work well on large sector disks.

The VHDX format also provides the following features:

Larger block sizes for dynamic and differencing disks, which allows these disks to attune to the needs of the workload.

A 4-KB logical sector virtual disk that allows for increased performance when used by applications and workloads that are designed for 4-KB sectors. The ability to store custom metadata about the file that the user might want to record, such

as operating system version or patches applied. Efficiency in representing data (also known as "trim"), which results in smaller file size and allows the underlying physical storage device to reclaim unused space. (Trim requires physical disks

directly attached to a virtual machine or SCSI disks, and trim-compatible hardware).

VHDX Format ?Features and Benefits VHDX format features provide features at the virtual hard disk as well as virtual hard disk file layers and is optimized to work well with modern storage hardware configurations and capabilities. At the

virtual hard disk layer, benefits include the ability to represent a large virtual disk size up to 64 TB, support larger logical sector sizes for a virtual disk up to 4 KB that facilitates the conversion of 4 KB sector physical disks to virtual disks, and

support large block sizes for a virtual disk up to 256 MB that enables tuning block size to match the IO patterns of the application or system for optimal performance. At the virtual hard disk file layer, the benefits include the use of a log to

ensure resiliency of the VHDX file to corruptions from system power failure events and a mechanism that allows for small pieces of user generated data to be transported along with the VHDX file. On modern storage platforms, the benefits

include optimal performance on host disks that have physical sector sizes larger than 512 bytes through improved data alignment and capability to use the information from the UNMAP command, sent by the application or system using the

virtual hard disk, to optimize the size of the VHDX file. The format is designed so that additional features could be introduced in the future by Microsoft or extended by other parser implementations. The format provides parsers the ability to

detect features in a VHDX file that a parser does not understand.

QUESTION 8

You work as an administrator at Contoso.com. The Contoso.com network consists of a single domain named Contoso.com. All servers in the Contoso.com domain, including domain controllers, have Windows Server 2012 R2 installed.

You have been instructed to make sure that Contoso.com users are not able to install a Windows Store application. You then create a rule for packaged apps.

Which of the following is the rule based on? (Choose all that apply.)

- A. The publisher of the package.
- B. The publisher of the application.
- C. The name of the package
- D. The name of the application
- E. The package version.
- F. The application version.

Correct Answer: ACE

Packaged apps (also known as Windows 8 apps) are new to Windows Server 2012 R2 and Windows 8.

They are based on the new app model that ensures that all the files within an app package share the same identity. Therefore, it is possible to control the entire application using a single AppLocker rule as opposed to the non-packaged apps

where each file within the app could have a unique identity. Windows does not support unsigned packaged apps which implies all packaged apps must be signed.

AppLocker supports only publisher rules for Packaged apps.

A publisher rule for a Packaged app is based on the following information:

Publisher of the package

Package name

Package version

All the files within a package as well as the package installer share these attributes. Therefore, an AppLocker rule for a Packaged app controls both the installation as well as the running of the app. Otherwise, the publisher rules for Packaged apps are no different than the rest of the rule collections; they support exceptions, can be increased or decreased in scope, and can be assigned to users and groups.

QUESTION 9

Your network contains an Active Directory domain. The domain contains three domain controllers named Server1, Server2, and Server3. All three domain controllers have the DNS Server role installed.

You create an Active-Directory-integrated zone named Zone1.com.

You need to configure Zone1.com to replicate only between Server1 and Server2.

What should you do?

- A. Modify the Security settings of Zone1.com and specify Server1 and Server2.
- B. Modify the Zone Transfers settings of Zone1.com and specify Server1 and Server2.
- C. Create an Active Directory application partition and store Zone1.com in the partition.
- D. Create a conditional forwarder for Zone1.com and specify Server1 and Server2 as the master servers.

Correct Answer: D

References: <https://www.microsoftpressstore.com/articles/article.aspx?p=2756482andseqNum=2>

QUESTION 10

Note: This question is part of a series of questions that use the same or similar answer choices. An answer choice may be correct for more than one question in the series. Each question is independent of the other questions in this series.

Information and details provided in a question apply only to that question.

Your network contains a server named Server1 that runs Windows Server 2012 R2. Server1 has the Hyper-V server role installed.

Server1 hosts four virtual machines named VM1, VM2, VM3, and VM4.

Server1 is configured as shown in the following table.

Hardware component	Configuration
Processor	Eight quad-core CPUs that have non-uniform memory access (NUMA)
Memory	32 GB of RAM
Disk	Two local 4-TB disks
Network	Eight network adapters VMQ-supported PCI-SIG-supported

VM2 sends and receives large amounts of data over the network.

You need to ensure that the network traffic of VM2 bypasses the virtual switches of the parent partition.

What should you configure?

- A. NUMA topology
- B. Resource control

- C. resource metering
- D. virtual Machine Chimney
- E. The VLAN ID
- F. Processor Compatibility
- G. The startup order
- H. Automatic Start Action
- I. Integration Services
- J. Port mirroring
- K. Single-root I/O virtualization

Correct Answer: K

Single-root I/O virtualization -capable network adapters can be assigned directly to a virtual machine to maximize network throughput while minimizing network latency and the CPU overhead required for processing network traffic.

References: [http://technet.microsoft.com/en-us/library/cc766320\(v=ws.10\).aspx](http://technet.microsoft.com/en-us/library/cc766320(v=ws.10).aspx) <http://technet.microsoft.com/en-us/library/hh831410.aspx> Exam Ref 70-410, Installing and Configuring Windows Server 2012 R2, Chapter 3: Configure Hyper-V, Objective 3.1: Create and Configure virtual machine settings, p.144 Training Guide: Installing and Configuring Windows Server 2012 R2: Chapter 7: Hyper-V Virtualization, Lesson 2: Deploying and configuring virtual machines, p.335

QUESTION 11

You have a server named Server1. Server1 runs Windows Server 2012 R2.

Network adapter name	Required IPv6 address type
NIC1	Public Routable
NIC2	Multicast

Server1 has two network adapters. Each network adapter must be configured as shown in the following table.

You need to configure the correct IPv6 address prefix for each network adapter.

Which prefix should you select for each network adapter?

To answer, drag the appropriate IPv6 prefix to the correct network adapter in the answer area.

Each prefix may be used once, more than once, or not at all. You may need to drag the split bar between panes or scroll to view content.

Select and Place:

IPv6 Prefixes	Answer Area
<input type="text" value="2000::"/>	NIC1: <input type="text" value="IPv6 Prefix"/>
<input type="text" value="FC00::"/>	NIC2: <input type="text" value="IPv6 Prefix"/>
<input type="text" value="FE80::"/>	
<input type="text" value="FF00::"/>	

Correct Answer:

IPv6 Prefixes	Answer Area
<input type="text"/>	NIC1: <input type="text" value="2000::"/>
<input type="text"/>	NIC2: <input type="text" value="FC00::"/>
<input type="text" value="FE80::"/>	
<input type="text" value="FF00::"/>	

Your network contains an Active Directory domain named contoso.com. All servers run Windows Server 2012 R2. The domain contains a server named Server1. You install the Windows PowerShell Web Access gateway on Server1.

You need to provide administrators with the ability to manage the servers in the domain by using the Windows PowerShell Web Access gateway. Which two cmdlets should you run on Server1? (Each correct answer presents part of the solution. Choose two.)

- A. Set-WSManQuickConfig
- B. Set-WSManInstance
- C. Add-PswaAuthorizationRule
- D. Set-BCAuthentication
- E. Install-PswaWebApplication

Correct Answer: CE

C. Adds a new authorization rule to the Windows PowerShell Web Access authorization rule set.

E. Configures the Windows PowerShell Web Access web Application in IIS. Incorrect Answers:

A: Configures the local computer for remote management.

B: Modifies the management information that is related to a resource.

D: Specifies the BranchCache computer authentication mode.

To Read the [Whole Q&As](#), please purchase the [Complete Version](#) from [Our website](#).

Try our product !

100% Guaranteed Success

100% Money Back Guarantee

365 Days Free Update

Instant Download After Purchase

24x7 Customer Support

Average 99.9% Success Rate

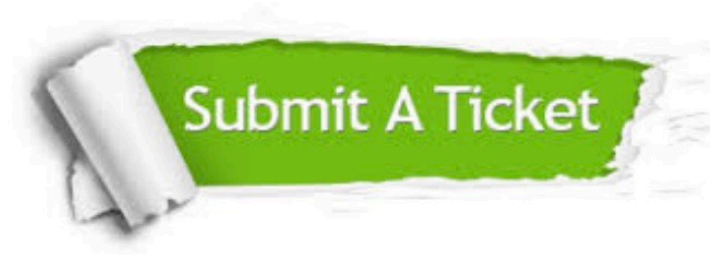
More than 800,000 Satisfied Customers Worldwide

Multi-Platform capabilities - [Windows](#), [Mac](#), [Android](#), [iPhone](#), [iPod](#), [iPad](#), [Kindle](#)

Need Help

Please provide as much detail as possible so we can best assist you.

To update a previously submitted ticket:



 <p>One Year Free Update Free update is available within One Year after your purchase. After One Year, you will get 50% discounts for updating. And we are proud to boast a 24/7 efficient Customer Support system via Email.</p>	 <p>Money Back Guarantee To ensure that you are spending on quality products, we provide 100% money back guarantee for 30 days from the date of purchase.</p>	 <p>Security & Privacy We respect customer privacy. We use McAfee's security service to provide you with utmost security for your personal information & peace of mind.</p>
---	---	--

Any charges made through this site will appear as Global Simulators Limited.

All trademarks are the property of their respective owners.