

**100%** Money Back  
**Guarantee**

**Vendor:**Microsoft

**Exam Code:**70-412

**Exam Name:**Configuring Advanced Windows Server  
2012 Services

**Version:**Demo

## QUESTION 1

You have a DHCP server named Server1 that runs Windows Server 2012 R2.

Server1 has two scopes named Production and Development. Currently, all DHCP clients register their host name in a DNS zone named contoso.com.

You need to ensure that only the clients that obtain an IP address from the Development scope, register their host name in a DNS zone named dev.contoso.com.

What should you do?

- A. Run the Set-DHCPServerv4Binding cmdlet.
- B. Modify the Advanced settings of the Development scope.
- C. Modify the Advanced settings of the DHCP server.
- D. Create a DHCP policy for the Development scope.

Correct Answer: D

DHCP policies can be defined server wide or for a specific scope. Any DNS registration behavior of the DHCP server which can be configured server wide or on a per scope basis ?for example, turn on/off the DNS registration (and deregistration) or DNS name protection ?can be configured on a per policy basis.

References: DHCP Policies in Windows Server 2012 <http://blogs.technet.com/b/teamdhcp/archive/2012/08/22/granular-dhcp-server-administration-using-dhcp-policies-in-windows-server-2012.aspx>

---

## QUESTION 2

You deploy an Active Directory Federation Services (AD FS) infrastructure. The infrastructure uses Active Directory as the attribute store. All servers run Windows Server 2012 R2.

Some users report that they fail to authenticate to the AD FS infrastructure.

You discover that only users who run third-party web browsers experience issues.

You need to ensure that all of the users can authenticate to the AD FS infrastructure successfully.

Which Windows PowerShell command should you run?

- A. Set-ADFSProperties -ProxyTrustTokenLifetime 1:00:00
- B. Set-ADFSProperties -AddProxyAuthenticationRulesNone
- C. Set-ADFSProperties -SSOLifetime 1:00:00
- D. Set-ADFSProperties -ExtendedProtectionTokenCheck None

Correct Answer: D

Certain client browser software, such as Firefox, Chrome, and Safari, do not support the Extended Protection for

Authentication capabilities that can be used across the Windows platform to protect against man-in-the-middle attacks. To

prevent this type of attack from occurring over secure AD FS communications, AD FS 2.0 enforces (by default) that all communications use a channel binding token (CBT) to mitigate against this threat. Note: Disable the extended Protection for authentication To disable the Extended Protection for Authentication feature in AD FS 2.0

On a federation server, login using the Administrator account, open the Windows PowerShell command prompt, and then type the following command:

Set-ADFSPProperties -extendedProtectionTokenCheck None Repeat this step on each federation server in the farm. References: Configuring Advanced Options for AD FS 2.0

---

### QUESTION 3

Your network contains one Active Directory domain named contoso.com. The forest functional level is Windows Server 2012. All servers run Windows Server 2012 R2. All client computers run Windows 8.1.

The domain contains 10 domain controllers and a read-only domain controller (RODC) named RODC01. All domain controllers and RODCs are hosted on a Hyper-V host that runs Windows Server 2012 R2.

You need to identify which domain controllers are authorized to be cloned by using virtual domain controller cloning.

Which cmdlet should you use?

- A. Get-ADGroupMember
- B. Get-ADDomainControllerPasswordReplicationPolicy
- C. Get-ADDomainControllerPasswordReplicationPolicyUsage
- D. Get-ADDomain
- E. Get-ADOptionalFeature

Correct Answer: A

If you want to be able to clone a Domain Controller, then authorize the original source Domain Controller to be used as the source for cloning by adding its computer object into the new "Cloneable Domain Controllers" Active Directory group.

The Get-ADGroupMember cmdlet gets the members of an Active Directory group. Members can be users, groups, and computers.

We use the Get-ADGroupMember cmdlet to retrieve the members of the "Cloneable Domain Controllers" Active Directory group.

References:

<http://blogs.technet.com/b/keithmayer/archive/2012/08/06/safely-cloning-an-active-directory-domain-controller-with-windows-server-2012-step-by-step-ws2012-hyperv-itpro-vmware.aspx>

---

### QUESTION 4

Your network contains two Active Directory forests named contoso.com and adatum.com.

Both forests contain multiple domains. All domain controllers run Windows Server 2012 R2.

Contoso.com has a one-way forest trust to adatum.com. A domain named paris.eu.contoso.com hosts several legacy applications that use NTLM authentication. Users in a domain named london.europe.adatum.com report that it takes a long

time to be authenticated when they attempt to access the legacy applications hosted in paris.eu.contoso.com.

You need to reduce how long it takes for the london.europe.adatum.com users to be authenticated in paris.eu.contoso.com.

What should you do?

- A. Create a shortcut trust.
- B. Create an external trust between the forest root domains.
- C. Disable SID filtering on the existing trust.
- D. Create an external trust.

Correct Answer: A

Shortcut trusts are one-way or two-way, transitive trusts that can be used when administrators need to optimize the authentication process. Authentication requests must first travel a trust path between domain trees, and in a complex forest this can take time, which can be reduced with shortcut trusts.

# When to create a shortcut trust

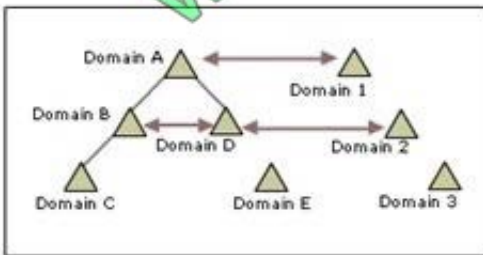
## In this article

Applies To: Windows Server 2003, Windows Server 2003 R2, Windows Server 2003 with SP1, Windows Server 2003 with SP2

## When to create a shortcut trust

Shortcut trusts are one-way or two-way, transitive trusts that can be used when administrators need to optimize the authentication process. Authentication requests must first travel a trust path between domain trees, and in a complex forest this can take time, which can be reduced with shortcut trusts. A trust path is the series of domain trust relationships that must be traversed in order to pass authentication requests between any two domains. For more information about trust paths, see [Trust direction](#).

Shortcut trusts are necessary when many users in a domain regularly log on to other domains in a forest. For example, using the following figure as an example, you could form a shortcut trust between domain B and domain D or domain A and domain 1 and so on.



Shortcut trusts effectively shorten the path traveled for authentication's made between domains located in two separate trees.

### Incorrect Answers:

B: Use external trusts to provide access to resources located on a Windows NT 4.0 domain or a domain located in a separate forest that is not joined by a forest trust.

C: Filters users or SIDs from one domain

D: Use external trusts to provide access to resources located on a Windows NT 4.0 domain or a domain located in a separate forest that is not joined by a forest trust

References: [https://technet.microsoft.com/en-us/library/cc737939\(v=ws.10\).aspx](https://technet.microsoft.com/en-us/library/cc737939(v=ws.10).aspx) <https://technet.microsoft.com/en->

**QUESTION 5**

Your network contains two Hyper-V clusters named Cluster1 and Cluster2. The clusters are configured as shown in the following table. Cluster1 contains a virtual machine named VM1.

Cluster name	Site	Node
Cluster 1	Site1	Node1 Node2
Cluster2	Site2	Node3 Node4

You need to configure a replica for VM1 on Cluster2.

Which two actions should you perform? (Each correct answer presents part of the solution. Choose two.)

NOTE: Each correct selection is worth one point.

- A. Configure the virtual switch settings on all of the nodes.
- B. Configure the Hyper-V Replica Broker cluster role on Cluster2.
- C. Configure the Hyper-V Replica Broker cluster role on Cluster1.
- D. Configure the settings of VM1 on Cluster1.
- E. Configure the Hyper-V settings of Node3 and Node4.
- F. Configure the Hyper-V settings of Node1 and Node2.

Correct Answer: BC

References: <https://blogs.technet.microsoft.com/virtualization/2012/03/27/why-is-the-hyper-v-replica-broker-required/>

---

**QUESTION 6**

Your network contains an Active Directory forest named adatum.com. The forest contains an Active Directory Rights Management Services (AD RMS) cluster.

A partner company has an Active Directory forest named litwareinc.com. The partner company does not have AD RMS deployed. You need to ensure that users in litwareinc.com can consume rights-protected content from adatum.com.

Which type of trust policy should you create?

- A. At federated trust
- B. A trusted user domain

C. A trusted publishing domain

D. Windows Live ID

Correct Answer: A

In AD RMS rights can be assigned to users who have a federated trust with Active Directory Federation Services (AD FS). This enables an organization to share access to rights-protected content with another organization without having to establish a separate Active Directory trust or Active Directory Rights Management Services (AD RMS) infrastructure.

Reference: AD RMS and AD FS Considerations [http://technet.microsoft.com/en-us/library/dd772651\(v=WS.10\).aspx](http://technet.microsoft.com/en-us/library/dd772651(v=WS.10).aspx)

---

### QUESTION 7

You have a server named Server1 that runs Windows Server 2012 R2.

Server1 has access to disks that connect to a RAID controller, iSCSI disks, and disks connected to a SCSI controller.

You plan to use a tiered storage space on Server1.

You need to identify which storage controller and volume type you must use for the tiered storage space.

Which storage components should you use?

To answer, select the appropriate options in the answer area.

Hot Area:

**Answer Area**

Storage controller: 

	▼
iSCSI	
RAID	
SCSI	

Storage volume type: 

	▼
Hardware-based RAID volume	
RAID-5 volume of dynamic disks	
Storage Pool virtual disk volume	

*www.Past4Lead.com*

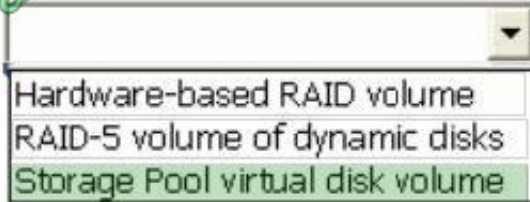
Correct Answer:

## Answer Area

Storage controller:



Storage volume type

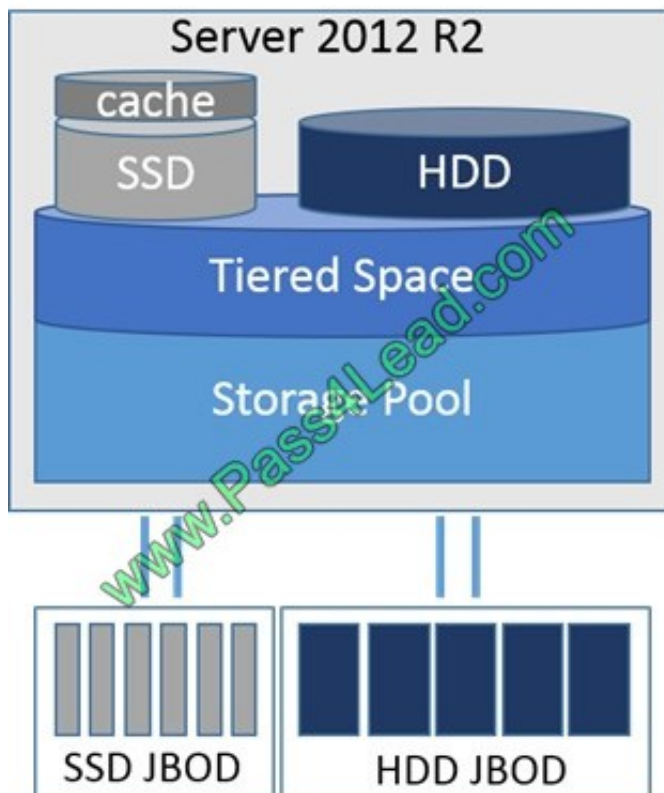


Box 1, Storage controller: SCSI Storage Spaces requirements include:

\* Serial ATA (SATA) or Serial Attached SCSI (SAS) connected disks, optionally in a just-a-bunch-of-disks (JBOD) enclosure Note: RAID adapters, if used, must have all RAID functionality disabled

\* Storage pools. A collection of physical disks that enable you to aggregate disks, expand capacity in a flexible manner, and delegate administration.

\* Storage spaces. Virtual disks created from free space in a storage pool. Storage spaces have such attributes as resiliency level, storage tiers, fixed provisioning, and precise administrative control. Illustration:





### QUESTION 8

Your network contains an Active Directory forest. The forest contains two domains named contoso.com and fabrikam.com. The functional level of the forest is Windows Server 2003.

You have a domain outside the forest named adatum.com.

You need to configure an access solution to meet the following requirements:

Users in adatum.com must be able to access resources in contoso.com.

Users in adatum.com must be prevented from accessing resources in fabrikam.com.

Users in both contoso.com and fabrikam.com must be prevented from accessing resources in adatum.com.

What should you create?

- A. a one-way realm trust from contoso.com to adatum.com
- B. a one-way realm trust from adatum.com to contoso.com
- C. a one-way external trust from contoso.com to adatum.com
- D. a one-way external trust from adatum.com to contoso.com

Correct Answer: C

The contoso domain must trust the adatum domain.

Note: In a One-way: incoming trust, users in your (trusted) domain can be authenticated in the other (trusting) domain. Users in the other domain cannot be authenticated in your domain.

Incorrect Answers:

A, B: Use realm trusts to form a trust relationship between a non-Windows Kerberos realm and a Windows Server domain.

D: The resources that are to be shared are in the contoso domain. References: Trust types

---

### QUESTION 9

Your network contains an Active Directory domain named contoso.com. The domain contains two member servers named Server1 and Server2. All servers run Windows Server 2012.

Server1 and Server2 have the Hyper-V server role and the Failover Clustering feature installed.

Server1 and Server2 are members of a cluster named Cluster1. Cluster1 hosts 10 virtual machines.

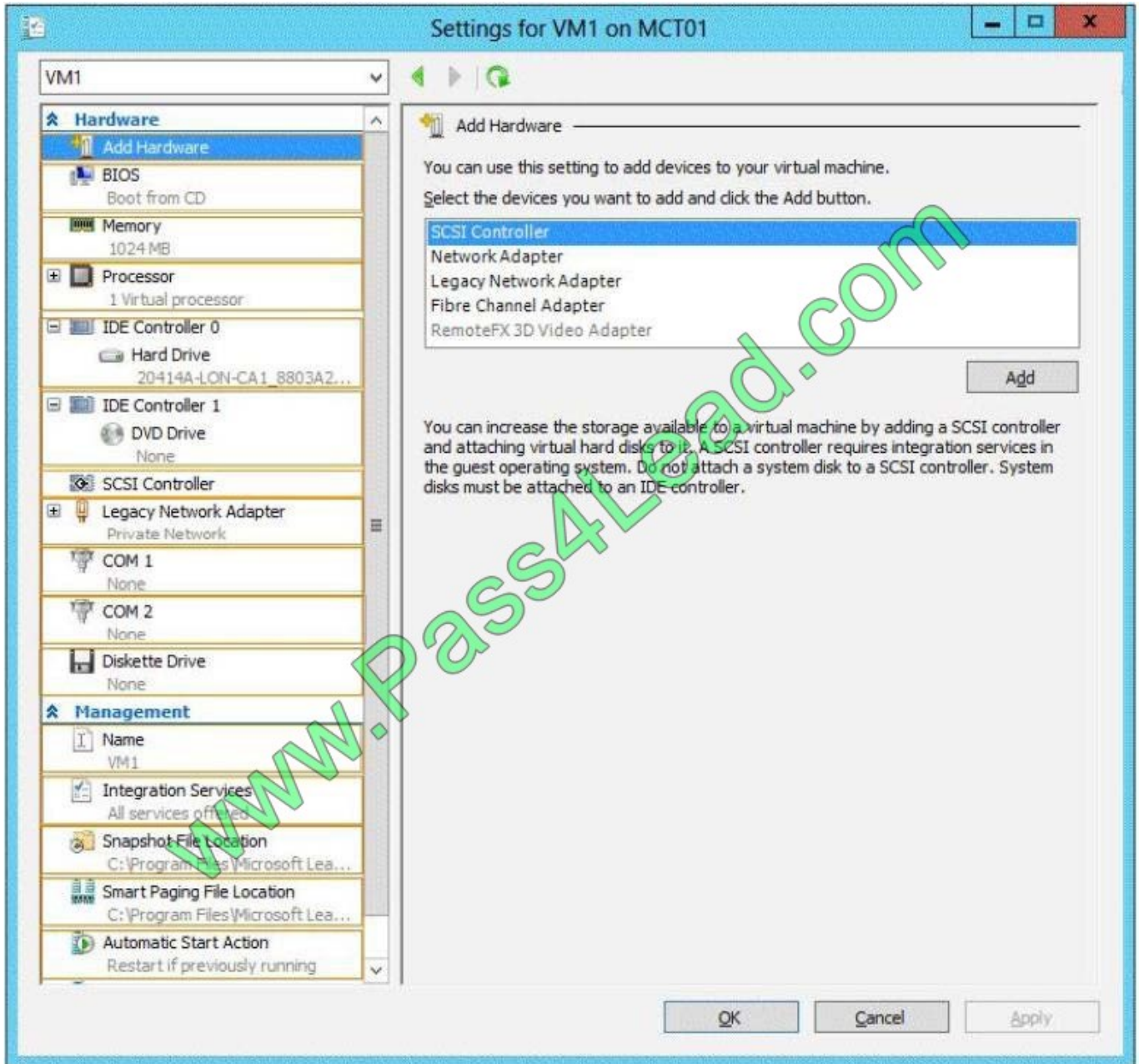
When you try to migrate a running virtual machine from one server to another, you receive the following error message: "There was an error checking for virtual machine compatibility on the target node."

You need to ensure that the virtual machines can be migrated from one node to another.

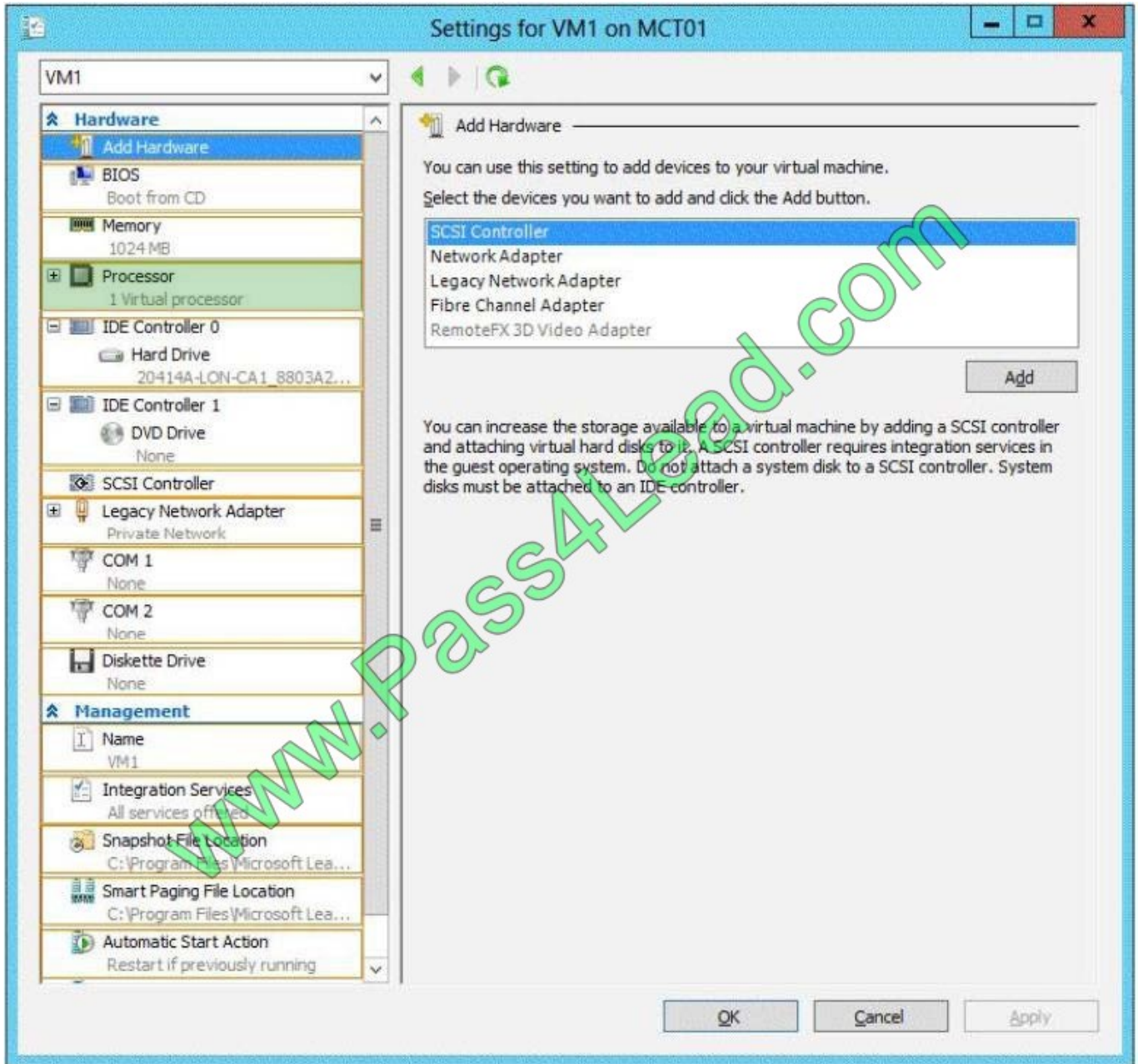
From which node should you perform the configuration?

To answer, select the appropriate node in the answer area.

Hot Area:

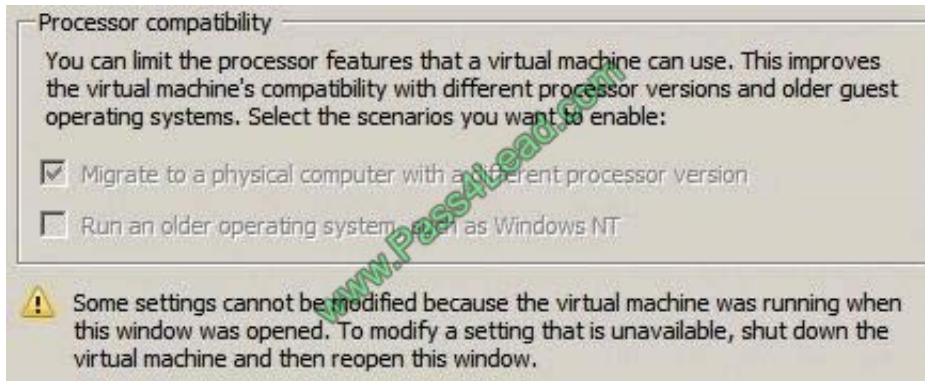


Correct Answer:



Explanation/Reference:

The Migrate to a physical computer with a different processor version setting ensures that the virtual machine uses only the features of the processor that are available on all versions of a virtualization- capable processor by the same processor manufacturer. It does not provide compatibility between different processor manufacturers.



Note: To enable processor compatibility mode for a virtual machine

Click Start, point to Administrative Tools, and then click Hyper-V Manager.

Select the server running Hyper-V and the desired virtual machine.

If the virtual machine is running, you must shut down the virtual machine to change the processor compatibility mode setting.

In the Action pane, click Settings, and then click Processor.

Expand Processor, and click Compatibility.

Click Migrate to a physical computer with a different processor, and then click OK.

Reference: Processor Compatibility Mode in Hyper-V

<https://technet.microsoft.com/en-us/library/dn859550.aspx>

---

## QUESTION 10

Your network contains an Active Directory forest named contoso.com. The forest contains three domains. All domain controllers run Windows Server 2012 R2.

The forest has a two-way realm trust to a Kerberos realm named adatum.com.

You discover that users in adatum.com can only access resources in the root domain of contoso.com.

You need to ensure that the adatum.com users can access the resources in all of the domains in the forest.

What should you do in the forest?

- A. Delete the realm trust and create a forest trust.
- B. Delete the realm trust and create three external trusts.
- C. Modify the incoming realm trust.
- D. Modify the outgoing realm trust.

Correct Answer: D

\*

A one-way, outgoing realm trust allows resources in your Windows Server domain (the domain that you are logged on to at the time that you run the New Trust Wizard) to be accessed by users in the Kerberos realm.

\*

You can establish a realm trust between any non-Windows Kerberos version 5 (V5) realm and an Active Directory domain. This trust relationship allows cross-platform interoperability with security services that are based on other versions of the Kerberos V5 protocol, for example, UNIX and MIT implementations. Realm trusts can switch from nontransitive to transitive and back. Realm trusts can also be either one-way or two-way.

Reference: Create a One-Way, Outgoing, Realm Trust

---

## QUESTION 11

You have a server named DNS1 that runs Windows Server 2012 R2.

You discover that the DNS resolution is slow when users try to access the company intranet home page by using the URL `http://companyhome`.

You need to provide single-label name resolution for `CompanyHome` that is not dependent on the suffix search order.

Which three cmdlets should you run? (Each correct answer presents part of the solution. Choose three.)

- A. `Add-DnsServerPrimaryZone`
- B. `Add-DnsServerResourceRecordCName`
- C. `Set-DnsServerDsSetting`
- D. `Set-DnsServerGlobalNameZone`
- E. `Set-DnsServerEDns`
- F. `Add-DnsServerDirectory Partition`

Correct Answer: ABD

You can use this task to create a `GlobalNames` zone to maintain a set of single-label, Domain Name System (DNS) names that Windows Server 2008 DNS servers can resolve on behalf of DNS clients throughout a single forest in Active Directory Domain Services (AD DS). Deploying a `GlobalNames` zone in a single forest requires that you perform the following steps:

(A)

Create a zone named `GlobalNames` that replicates to all domain controllers in the forest.

(B)

Add an alias (CNAME) record to the zone for each host for which you want to provide single-label name resolution. For example, if you want DNS clients to be able to access a server whose fully qualified domain name (FQDN) is `cweb.itgroup.contoso.com`, add an alias (CNAME) resource record that maps the name `cweb` to `cweb.igroup.contoso.com`.

Note:

- A. The Add-DnsServerPrimaryZone cmdlet adds a specified primary zone on a Domain Name System (DNS) server.
- B. The Add-DnsServerResourceRecordCName cmdlet adds a canonical name (CNAME) resource record to a specified Domain Name System (DNS) zone. A CNAME record allows you to use more than one resource record to refer to a single host
- D. The Set-DnsServerGlobalNameZone cmdlet enables or disables single-label Domain Name System (DNS) queries. It also changes configuration settings for a GlobalNames zone. The GlobalNames zone supports short, easy-to-use names instead of fully qualified domain names (FQDNs) without using Windows Internet Name Service (WINS) technology. For instance, DNS can query SarahJonesDesktop instead of SarahJonesDesktop.contoso.com.

Reference: Adding a GlobalNames zone to a forest [https://technet.microsoft.com/en-us/library/cc816717\(v=ws.10\).aspx](https://technet.microsoft.com/en-us/library/cc816717(v=ws.10).aspx)

---

## QUESTION 12

Your network contains one Active Directory domain named contoso.com. The domain contains the domain controllers configured as shown in the following table.

Name	Operating system
DC1	Windows Server 2008 Service Pack 2 (SP2)
DC2	Windows Server 2008 R2 Service Pack 1 (SP1)
DC3	Windows Server 2012

The functional level of the domain and the forest is Windows Server 2008.

An administrator named Admin1 is a member of the Domain Admins group.

You need to ensure that Admin1 can deploy a Windows Server 2012 R2 domain controller to contoso.com.

What should you do?

- A. Raise the forest functional level.
- B. Run the Set-ADForestMode cmdlet.
- C. Raise the domain functional level.
- D. Run the adprep.exe command.
- E. Demote DC1 to a member server.
- F. Upgrade DC1 to Windows Server 2012.
- G. Add Admin1 to the Schema Admin Group.

Correct Answer: DF

Adprep.exe commands run automatically as needed as part of the AD DS installation process on servers that run Windows Server 2012 or later. The commands need to run in the following cases: Before you add the first domain controller that runs a version of Windows Server that is later than the latest version that is running in your existing domain.

Before you upgrade an existing domain controller to a later version of Windows Server, if that domain controller will be the first domain controller in the domain or forest to run that version of Windows Server.

References: Running Adprep.exe [https://technet.microsoft.com/en-us/library/dd464018\(v=ws.10\).aspx](https://technet.microsoft.com/en-us/library/dd464018(v=ws.10).aspx)



To Read the [Whole Q&As](#), please purchase the [Complete Version](#) from [Our website](#).

## Try our product !

**100%** Guaranteed Success

**100%** Money Back Guarantee

**365** Days Free Update

**Instant Download** After Purchase

**24x7** Customer Support

Average **99.9%** Success Rate

More than **800,000** Satisfied Customers Worldwide

Multi-Platform capabilities - **Windows, Mac, Android, iPhone, iPod, iPad, Kindle**

## Need Help

Please provide as much detail as possible so we can best assist you.

To update a previously submitted ticket:



 <p><b>One Year Free Update</b> Free update is available within One Year after your purchase. After One Year, you will get 50% discounts for updating. And we are proud to boast a 24/7 efficient Customer Support system via Email.</p>	 <p><b>Money Back Guarantee</b> To ensure that you are spending on quality products, we provide 100% money back guarantee for 30 days from the date of purchase.</p>	 <p><b>Security &amp; Privacy</b> We respect customer privacy. We use McAfee's security service to provide you with utmost security for your personal information &amp; peace of mind.</p>
---	---	--

Any charges made through this site will appear as Global Simulators Limited.

All trademarks are the property of their respective owners.