

100% Money Back
Guarantee

Vendor:Microsoft

Exam Code:70-698

Exam Name:Installing and Configuring Windows 10

Version:Demo

QUESTION 1

Your network contains a single Active Directory domain. The domain contains two computers named Computer1 and Computer2. From Computer1, you need to view the installed devices and their associated drivers on Computer2.

What should you use?

- A. the Get-PnpDevice cmdlet
- B. the Get-WindowsDriver cmdlet
- C. the Get-OdbcDriver cmdlet
- D. the driverquery.exe command

Correct Answer: D

<https://blogs.technet.microsoft.com/askperf/2011/10/21/two-minute-drill-driverquery-exe/>

QUESTION 2

Note: This question is part of a series of a questions that use the same set of answer choices. Each answer choice may be used once, more than once, or not at all. You have a computer named Computer1 that has storage configured as shown in the following table.

Disk name	Size	Storage pool name
Disk1	200 GB	Pool1
Disk2	100 GB	Pool1
Disk3	500 GB	Pool1
Disk4	500 GB	Pool2
Disk5	500 GB	Pool2
Disk6	800 GB	None
Disk7	100 GB	Pool3
Disk8	100 GB	Pool3

Pool1 contains a storage space named Space1 that is 300 GB. Pool3 contains a storage space named Space2 that is 100 GB. Pool2 is empty.

You need to configure Space3 to be 200 GB.

What should you use?

- A. Add-PhysicalDisk
- B. Diskpart
- C. New-VirtualDisk

D. Remove-PhysicalDisk

E. Resize-VirtualDisk

F. Set-StoragePool

G. Subst

H. Update-Disk

Correct Answer: A

[https://technet.microsoft.com/en-us/library/hh848702\(v=wps.630\).aspx](https://technet.microsoft.com/en-us/library/hh848702(v=wps.630).aspx)

QUESTION 3

Your organization has a shared OneDrive for Business location with video files used for self-paced training. When users attend the training, they synchronize files from the OneDrive for Business location to their computers.

A user named User1 is fired from the company and maliciously deleted all files that were on the local machine, causing all files on OneDrive for Business and synchronized to all users to be deleted.

User1 also emptied the recycle bin on the local machine.

You need to restore the video files.

What should you do?

A. Restore the files by using the Clear-RecycleBin Windows PowerShell cmdlet.

B. Restore the files from another computer's recycle bin.

C. Restore the files from the OneDrive for Business recycle bin.

D. Restore the files from the second stage OneDrive for Business recycle bin.

Correct Answer: C

You should restore the files from the OneDrive for Business recycle bin. When synchronized files are deleted locally, it also triggers a delete operation on OneDrive for Business and on all machines connected to the same share.

You should not restore the files by using the Clear-RecycleBin Windows PowerShell cmdlet. This cmdlet would attempt to empty the local recycle bin again.

You should not restore the files from another computer's recycle bin. When the delete operation is triggered from OneDrive for Business, files are not placed in the recycle bin of the local machines.

You should not restore the files from the second stage OneDrive for Business recycle bin. The user never cleared the recycle bin in OneDrive for Business, so the files would not have ended up in the second stage recycle bin.

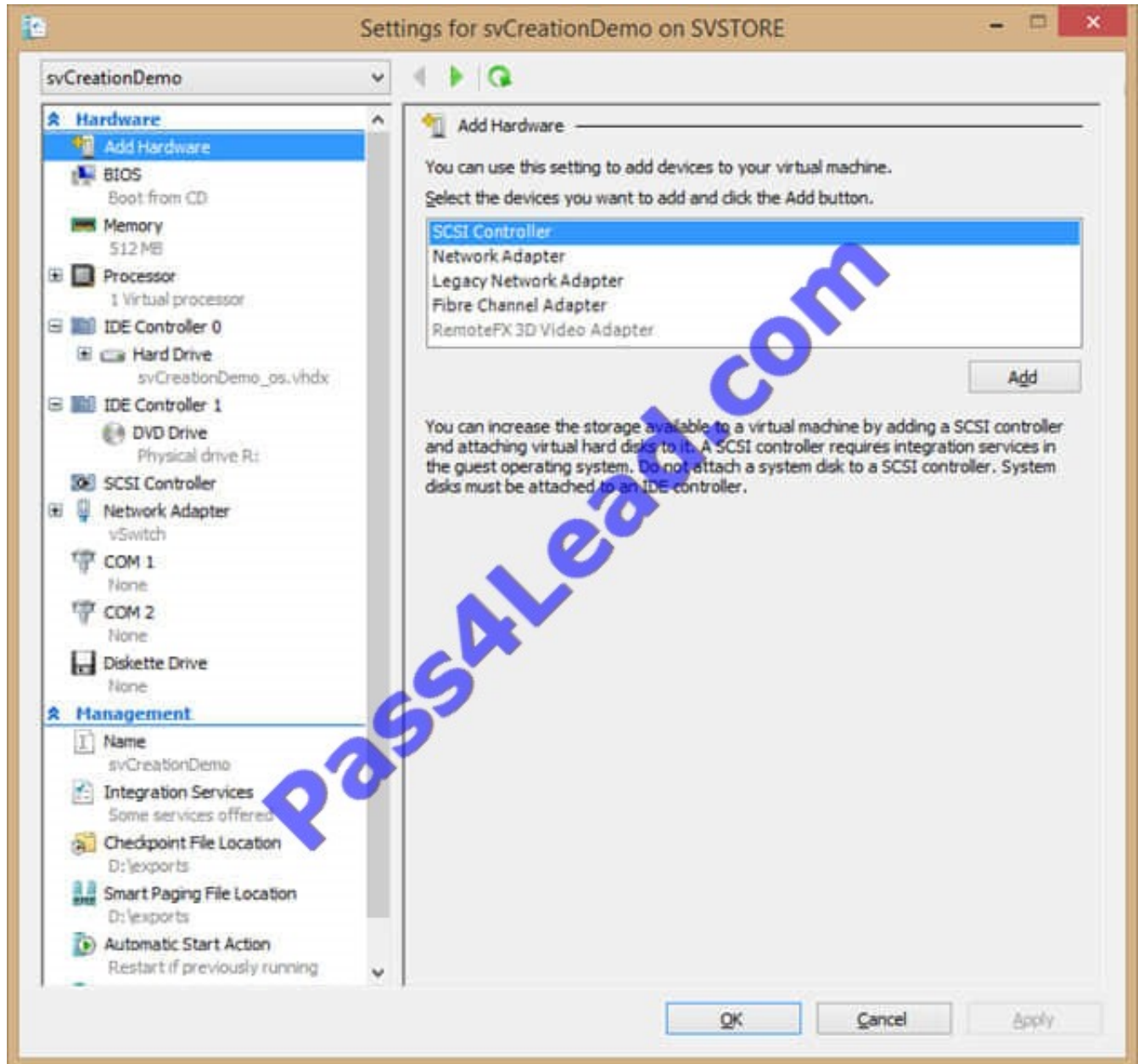
References:

<https://support.office.com/en-us/article/restore-deleted-files-or-folders-in-onedrive-949ada80-0026-4db3-a953-c99083e6a84f>

QUESTION 4

You are the administrator for a company. All devices run Windows 10 Enterprise.

Client Hyper-V is enabled on some devices. You need to verify how the Hyper-V settings are configured for a specific virtual machine (VM) on one of the devices.



Use the drop-down menus to select the answer choice that answers each question. NOTE: Each correct selection is worth one point.

Hot Area:

How are checkpoints for the VM created?

	▼
Guest backup technologies in the VM to create the checkpoint	
Save State captures state, data, and configuration of the running VM	

Which generation is this VM?

	▼
Generation 1	
Generation 2	

Correct Answer:

How are checkpoints for the VM created?

	▼
Guest backup technologies in the VM to create the checkpoint	
Save State captures state, data, and configuration of the running VM	

Which generation is this VM?

	▼
Generation 1	
Generation 2	

References: <https://docs.microsoft.com/en-us/virtualization/hyper-v-on-windows/user-guide/checkpoints>
[https://docs.microsoft.com/en-us/previous-versions/windows/it-pro/windows-server-2012-R2-and-2012/dn282285\(v=ws](https://docs.microsoft.com/en-us/previous-versions/windows/it-pro/windows-server-2012-R2-and-2012/dn282285(v=ws)

QUESTION 5

You have a Windows Server Update Services (WSUS) server.

You need to configure a computer to receive updates from WSUS. The solution must ensure that the updates are installed only on Sunday at 20:00.

Which two settings should you configure? To answer, select the appropriate settings in the answer area.

Hot Area:

Local Group Policy Editor

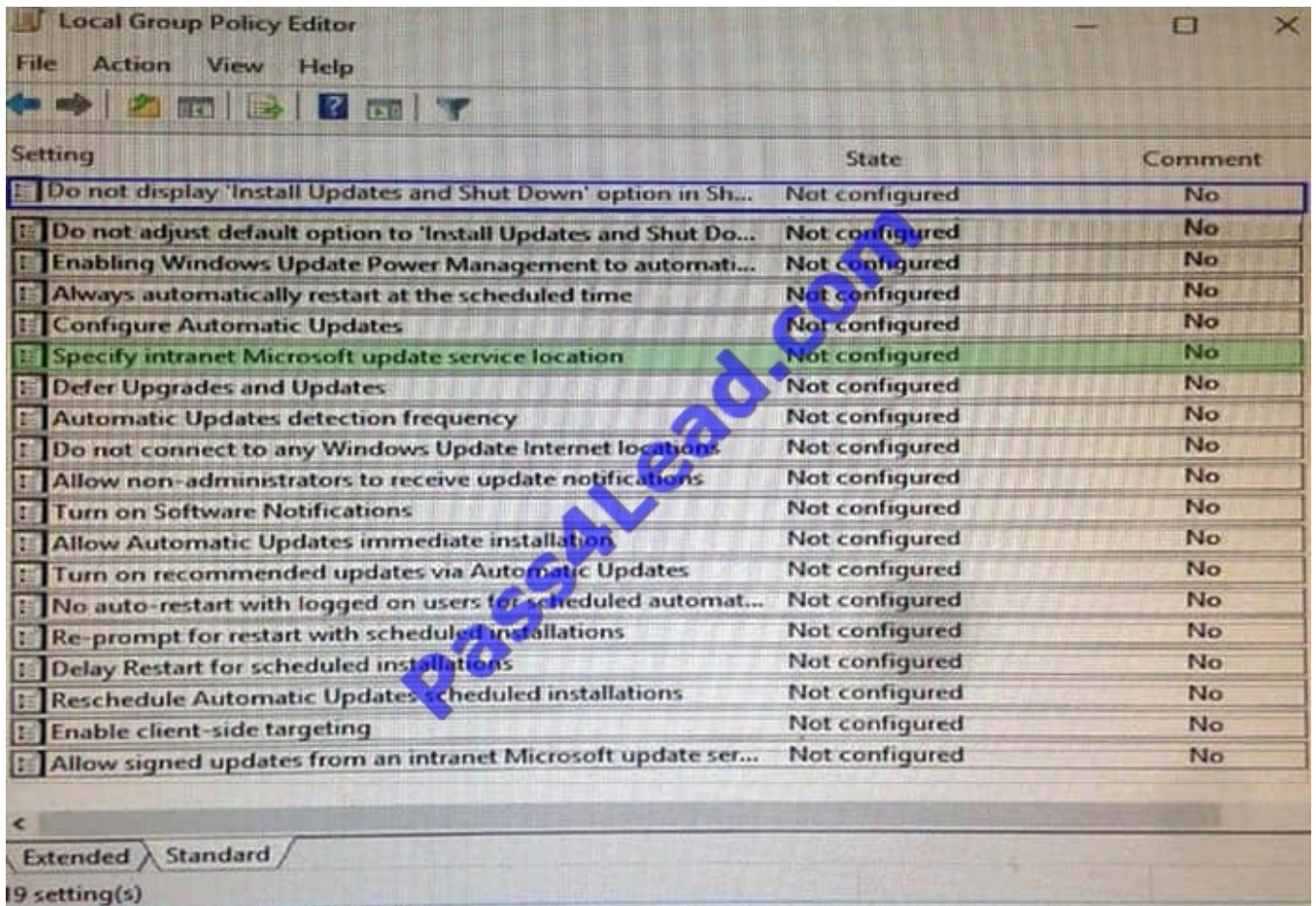
File Action View Help

Setting	State	Comment
Do not display 'Install Updates and Shut Down' option in Sh...	Not configured	No
Do not adjust default option to 'Install Updates and Shut Do...	Not configured	No
Enabling Windows Update Power Management to automati...	Not configured	No
Always automatically restart at the scheduled time	Not configured	No
Configure Automatic Updates	Not configured	No
Specify intranet Microsoft update service location	Not configured	No
Defer Upgrades and Updates	Not configured	No
Automatic Updates detection frequency	Not configured	No
Do not connect to any Windows Update Internet locations	Not configured	No
Allow non-administrators to receive update notifications	Not configured	No
Turn on Software Notifications	Not configured	No
Allow Automatic Updates immediate installation	Not configured	No
Turn on recommended updates via Automatic Updates	Not configured	No
No auto-restart with logged on users for scheduled automat...	Not configured	No
Re-prompt for restart with scheduled installations	Not configured	No
Delay Restart for scheduled installations	Not configured	No
Reschedule Automatic Updates scheduled installations	Not configured	No
Enable client-side targeting	Not configured	No
Allow signed updates from an intranet Microsoft update ser...	Not configured	No

Extended Standard

19 setting(s)

Correct Answer:



QUESTION 6

A company has client computers that run Windows 10. Each computer has two hard drives.

You need to create a dynamic volume on each computer that maximizes write performance with data fault tolerance.

Which kind of dynamic volume should you create?

- A. Striped Volume
- B. RAID 5 Volume
- C. Spanned Volume
- D. Mirrored Volume

Correct Answer: D

[https://technet.microsoft.com/enus/library/cc737048\(v=ws.10\).aspx#w2k3tr_ddisk_what_zcub](https://technet.microsoft.com/enus/library/cc737048(v=ws.10).aspx#w2k3tr_ddisk_what_zcub).

QUESTION 7

Note: This question is part of a series of questions that present the same scenario. Each question in the series contains a unique solution. Determine whether the solution meets the stated goals.

A user named User1 is a member of the local Administrators group on Computer1 and Computer2.

User1 fails to access the Event Viewer logs on Computer 2 from Computer 1.

User1 can connect to Computer2 remotely by using Computer Management.

You need to ensure that User1 can use Event Viewer on Computer1 to remotely view the Event Viewer logs on Computer 2.

Solution: You run winrm quick config on Computer2.

Does this meet the goal?

A. Yes

B. No

Correct Answer: B

<https://technet.microsoft.com/en-us/library/ff700227.aspx>

QUESTION 8

You have a computer named Computer1 that runs Windows 10 Enterprise. Computer1 is configured to receive Windows updates from the Internet.

If a user is logged on to Computer1, you need to prevent Computer1 from automatically restarting without the logged on user's consent after the installation of the Windows updates.

What should you do?

A. Enable the Defer upgrades setting.

B. Edit the Automatic App Update scheduled task.

C. Configure the Choose how updates are delivered setting.

D. Configure the Choose how updates are installed setting.

Correct Answer: D

In the Choose how updates are installed setting, you can use the drop-down menu to choose an option:

The Schedule a restart option will allow the user to choose when the computer is restarted. Of the answers given, this is the only way to prevent Computer1 from automatically restarting without the logged on user's consent after the installation of the Windows updates.

QUESTION 9

Note: This question is part of a series of questions that use the same set of answer choices. Each answer choice may be used once, more than once, or not at all.

You have a computer named Computer1. Computer1 has a virtual hard disk (VHD) named Disk1.vhcx. Windows is installed on Disk1.vhdx. Disk1.vhdx is visible in File Explorer as drive E.

You need to configure Computer1 to start from VHDX. Hardware virtualization must not be available when Computer1 starts from VHDX.

What should you run?

- A. Add-Windows Image
- B. bcdboot.exe
- C. bcdedit.exe
- D. bootcfg.exe
- E. bootim.exe
- F. bootsect.exe
- G. diskpart.exe
- H. Expand-Windows Image

Correct Answer: B

<https://msdn.microsoft.com/enus/windows/hardware/commercialize/manufacture/desktop/boot-to-vhd--native-boot--add-a-virtual-hard-disk-to-the-boot-menu>

QUESTION 10

You are the system administrator for a company. You plan to run Windows 10 Enterprise on all devices.

Groups of devices must implement specific features.

You need to determine which type of deployment you should perform for each feature.

Which installation types should you use? To answer, drag the appropriate installation types to the correct features. Each installation type may be used once, more than once, or not at all. You may need to drag the split bar between panes or

scroll to view content.

NOTE: Each correct selection is worth one point.

Select and Place:

Windows To Go

Local Hard Drive Installation

Trusted Platform Module is used
Hibernate is disabled by default
Windows Recovery Environment is available.

Installation type

Installation type

Installation type

Installation type

Correct Answer:

Windows To Go

Local Hard Drive Installation

Trusted Platform Module is used
Hibernate is disabled by default
Windows Recovery Environment is available.

Local Hard Drive Installation

Windows To Go

Local Hard Drive Installation

Installation type

QUESTION 11

You manage an Active Directory Domain Service (AD DS) domain for a company. All employee devices are joined to the domain. You have the following four domain controllers: DC01, DC02, DC03 and DC04. All employee devices are joined

to the domain. You deploy Windows 10 Pro to all devices.

You are currently using volume activation. You experience Windows licensing activation issues with a computer named Computer01. You need to investigate the licensing issues for the problem computer. What should you do? To answer,

configure the appropriate options in the dialog box in the answer area.

NOTE: Each correct selection is worth one point.

Hot Area:

On

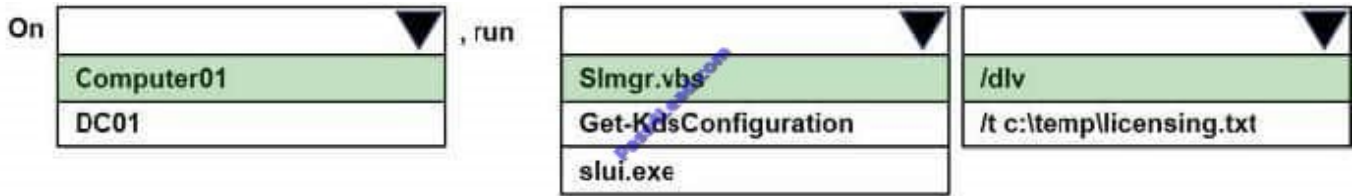
▼
Computer01
DC01

, run

▼
Slmgr.vbs
Get-KdsConfiguration
slui.exe

▼
/dlv
/t c:\templicensing.txt

Correct Answer:



QUESTION 12

Note: This question is part of a series of questions that use the same set of answer choices. Each answer choice may be used once, more than once, or not at all. You have a computer named Computer1 that has storage configured as shown in the following table.

Disk name	Size	Storage pool name
Disk1	200 GB	Pool1
Disk2	100 GB	Pool1
Disk3	500 GB	Pool1
Disk4	500 GB	Pool2
Disk5	500 GB	Pool2
Disk6	800 GB	None
Disk7	100 GB	Pool3
Disk8	100 GB	Pool3

Pool1 contains a storage space named Space1 that is 300 GB. Pool3 contains a storage space named Space2 that is 100 GB. Pool2 is empty. You discover that Disk2 experiences physical errors.

You need to ensure that all of the data in Space1 is stored on other disks in the storage pool only.

What should you use?

- A. Add-PhysicalDisk
- B. Diskpart
- C. New-VirtualDisk
- D. Remove-PhysicalDisk
- E. Resize-VirtualDisk
- F. Set-StoragePool
- G. Subst
- H. Update-Disk

Correct Answer: F

[https://technet.microsoft.com/en-us/library/hh848697\(v=wps.630\).aspx](https://technet.microsoft.com/en-us/library/hh848697(v=wps.630).aspx)

To Read the [Whole Q&As](#), please purchase the [Complete Version](#) from [Our website](#).

Try our product !

100% Guaranteed Success

100% Money Back Guarantee

365 Days Free Update

Instant Download After Purchase

24x7 Customer Support

Average 99.9% Success Rate

More than 800,000 Satisfied Customers Worldwide

Multi-Platform capabilities - [Windows](#), [Mac](#), [Android](#), [iPhone](#), [iPod](#), [iPad](#), [Kindle](#)

Need Help

Please provide as much detail as possible so we can best assist you.

To update a previously submitted ticket:



 <p>One Year Free Update Free update is available within One Year after your purchase. After One Year, you will get 50% discounts for updating. And we are proud to boast a 24/7 efficient Customer Support system via Email.</p>	 <p>Money Back Guarantee To ensure that you are spending on quality products, we provide 100% money back guarantee for 30 days from the date of purchase.</p>	 <p>Security & Privacy We respect customer privacy. We use McAfee's security service to provide you with utmost security for your personal information & peace of mind.</p>
---	---	--

Any charges made through this site will appear as Global Simulators Limited.

All trademarks are the property of their respective owners.